

THE HAMISH MK2 4 BED HOUSE + LAND PACKAGE



Lot 1406, Grandvue, Officer

Land: 520m²

Facade shown is for illustration purposes only

\$588,040*

Price includes FHOG

The Hamish Mk2 is a versatile floorplan that is great for first homebuyers through to growing families. With 4 Bedrooms an open plan kitchen and living area along with a separate living room The Hamish encompasses all the modern lifestyle options required to entertain, live and relax in stylish comfort. Located in the Sought-after Grandvue Estate, this amazing package includes:

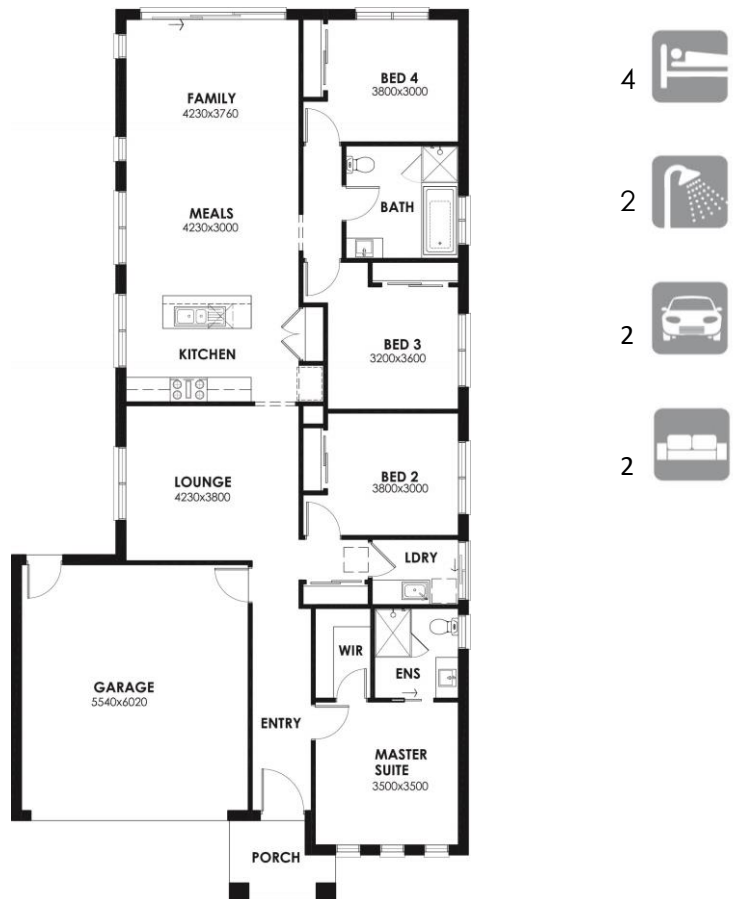
- 2590mm Ceilings
 - 20mm Stone Benchtop to Kitchen
 - 10 x 70mm Downlights
 - Pot Drawers x 3
 - Dishwasher
 - 900mm Under Bench Oven
 - Single Function Shower Rails
 - 400 x 600mm Shower Niches
 - Tiled Shower Bases with Hob
 - Flyscreens to Opening Windows
 - Garage Sectional Door with Remotes
 - Site cost allowance
- ...And so much more!

At SJD Homes, we'll adapt any floorplan to make sure all your needs are met. Add to that our custom design service, individual colour consultations and one on one customer attention to ensure we make your dreams a reality.

For more information visit the Highgrove Display at 25 Newbridge Boulevard, Clyde North and speak to Mark.

* Promo pricing, Subject to Change

* Price includes FHOG, price without FHOG \$598,040



Mark Whitney | Building Consultant
M. 0456 315 622
E. mark@sjdhomes.com.au
www.sjdhomes.com.au

Resta Eybers | Sales Associate
M. 0498 118 683
E. resta@sjdhomes.com.au
www.sjdhomes.com.au

SJDhomes