



**EASTWEST**  
HOMES

HOUSE & LAND  
PACKAGE

P



3 2 2



**\$750,500\***

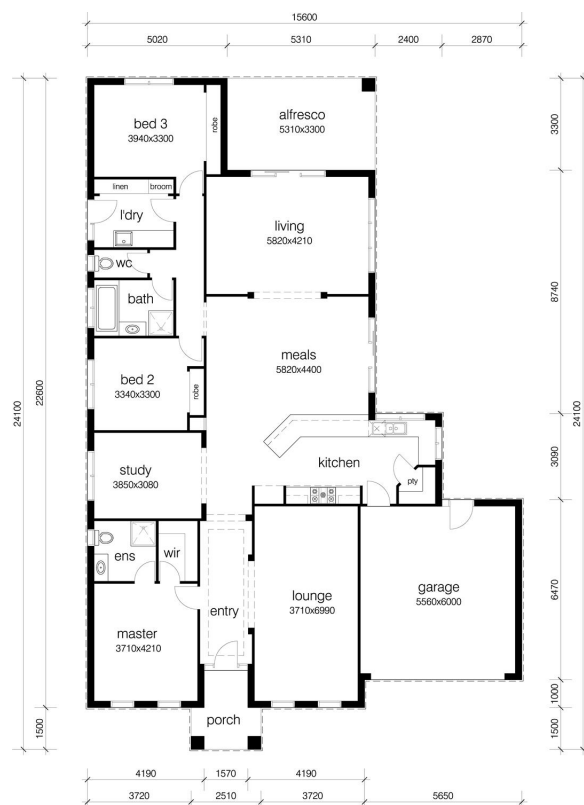
## HOUSE & LAND PACKAGE

Lot 1462 Peck Road (962m<sup>2</sup>)  
OFFICER

The Wimmera 30 (278.4m<sup>2</sup>)

Austral bricks & Boral roof tiles;  
Corinthian entry door & Gainsborough trilock;  
450mm eaves;  
Bradnam's double glazed windows;  
2550mm ceilings;  
Porcelain floor tiles & solution dyed nylon carpet;  
ILVE 900mm appliances;  
Clipsal LED downlights;  
Quantum Quartz 20mm stone benchtops;  
Clark double bowl sink;  
Caroma & Dorf tapware & whiteware;  
Bramer 4.7 star ducted heating;  
NBN & recycled water;  
Wattyl 3 coat paint + more!

**Christine Logan - 0400 514 248**



\*Price is subject to soil test, site survey and developer approval.

All Images are for illustrative purposes only. Please contact Christine Logan for exact specifications and included features.

[www.eastwesthomes.com.au](http://www.eastwesthomes.com.au)

03 8774 9333